

CATALOGUE Light Coagulator

Light Coagulator LC 250 D (digital)

Basic unit with mains cable

- 24 Volt / 250 Watt output
- digital timer with light beam
- both timer and continuous operation
- 3 programmable pre-selected time settings
- coagulation duration adjustable via \square / \square -buttons

Order-No. LC250D.01



Probe cable

- pluggable at both ends
- length 3 m, autoclavable
- suitable for basic unit LC250D.01

Order-No. LC250D.02



Foot switch for basic unit

- according to IP 68

Order-No. LC250D.03





Standard probes for the LC 250 D

All standard probes are autoclavable and are activated via the foot switch.

Standard probe flat straight

- 24 Volt / 250 Watt electrical power
- contact head Ø 16 mm
- luminous power app. 40 W/cm²

Order-No. LC250D.S13

Standard probe wedge straight

- especially suitable for use in ruptures
- 24 Volt / 250 Watt electrical power
- contact head Ø 16 mm
- length of wedge app. 16 mm
- luminous power app. 25 W/cm²

Order-No. LC250D.S14

Standard probe large, flat straight

- for coagulation of large areas
- 24 Volt / 250 Watt electrical power
- contact head Ø 25 mm
- luminous power app. 25 W/cm²

Order-No. LC250D.S16

Standard probe flat right angle

- for difficultly accessible areas
- 24 Volt / 250 Watt electrical power
- contact head Ø 16 mm
- luminous power app. 40 W/cm²

Order-No. LC250D.S20

Standard probe wedge right angle

- for difficultly accessible areas
- especially for use in ruptures
- 24 Volt / 250 Watt electrical power
- contact head Ø 16 mm
- luminous power app. 25 W/cm²

Wedge parallel to longitudinal axis **Order-No. LC250D.S23**
alternative:

Wedge perpendicular to longitudinal axis (not pictured)

Order-No. LC250D.S21

Standard probe flat 45°

- universal contact head
- 24 Volt / 250 Watt electrical power
- contact head Ø 16 mm
- luminous power app. 40 W/cm²

Order-No. LC250D.S30

Standard probe wedge 45°

- universal contact head
- especially for use in ruptures
- 24 Volt / 250 Watt electrical power
- contact head Ø 16 mm
- luminous power app. 25 W/cm²

Wedge parallel to longitudinal axis **Order-No. LC250D.S33**
alternative:

Wedge perpendicular to longitudinal axis (not pictured)

Order-No. LC250D.S31

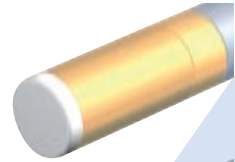
Light Coagulator LC 250 D (Accessories)



Non-adhesive caps

- for all flat standard-probes with \varnothing 16 mm

Order-No. LCD.201



- for the flat standard probe with \varnothing 25 mm

Order-No. LCD.202



- for all wedge-shaped standard probes

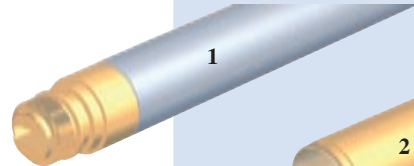
Order-No. LCD.203



Order numbers for parts of standard probes

1-Probe pole

Best.-Nr. LC250D.10



2-Contact head

flat straight \varnothing 16 mm

Order-No. LC250D.A13



3-Contact head

wedge straight \varnothing 16 mm

Order-No. LC250D.A14



4-Contact head large

flat straight \varnothing 25 mm

Order-No. LC250D.A16



5-Contact head

flat right-angle \varnothing 16 mm

Order-No. LC250D.A20



6-Contact head

wedge right-angle parallel \varnothing 16 mm

Order-No. LC250D.A23



7-Contact head

wedge right-angle perpendicular \varnothing 16 mm

Order-No. LC250D.A21



8-Contact head

flat 45° \varnothing 16 mm

Order-No. LC250D.A30



9-Contact head

wedge 45° parallel \varnothing 16 mm

Order-No. LC250D.A33



10-Contact head

wedge 45° perpendicular \varnothing 16 mm

Order-No. LC250D.A31





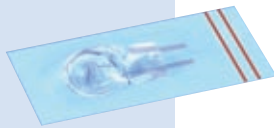
Light Coagulator LC 250 D (Accessories)



Probe adapter

- for all endoscopic probes and screw-in probes (pages 6-8)
- 24 Volt / 250 Watt electrical power
- connected to the power supply via the probe cable
- with manual switch
- ⊕/⊖-buttons on the back of the adapter for coagulation duration adjustment
- autoclavable

Order-No. LC250D.40



Spare halogen light-bulb

- for Light Coagulators LC 250 D (suitable for standard probes as well as for probe adapters)
- 24 Volt / 250 Watt electrical power

Order-No. LCD.301



Bulb extractor

- for all kinds of probes including probe adapters

Order-No. LCD.302



Gasket for probe adapters

- suitable for LC250D.40

Order-No. LCD.303



Gasket for standard probes

Order-No. LCD.304



Replacement support

- to change gaskets of standard probes

Order-No. LCD.305

Light Coagulator LC 150 D



Basic unit with mains cable

- 15 Volt / 150 Watt output
- with digital display

Order-No. LC150D.01



Probe adapter

- for all endoscopic and other screw-in probes (pages 6-8)
- 15 Volt / 150 Watt electrical power
- probe cable is fixed to the probe adapter
- suitable for basic unit LC150D.01
- not autoclavable
- with manual switch and \oplus/\ominus -buttons on the back for coagulation duration adjustment

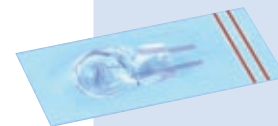
Order-No. LC150D.02



Spare halogen light-bulb

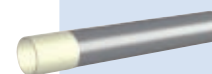
- for Light Coagulators LC150D.02
- 15 Volt / 150 Watt electrical power

Order-No. LCD.306



Bulb extractor

Order-No. LCD.302



Upon request, the LC 150 D is also available in an autoclavable version.



Accessories for the Light Coagulators

Probes for endoscopic surgery suitable for any kind of probe adapter

Endoscopic probes for laparoscopy

- suitable for use with 10 mm trocars
- working length app. 340 mm, Ø 10 mm
- luminous power app. 40 W/cm²
- autoclavable

Version 1:

Probe with radiation 0°

Order-No. LCD.401

Version 2:

Probe with radiation 30°

Order-No. LCD.402

Endoscopic probes for rigid endoscopy

- working length app. 340 mm, Ø 5 mm
- luminous power app. 50 W/cm²
- autoclavable

Version 1:

Probe with radiation 0°

Order-No. LCD.403

Version 2:

Probe with radiation 30°

Order-No. LCD.404

**Other lengths and diameters
available as special orders upon
request (e.g. for biopsies).**

Non-adhesive caps for endoscopic probe LCD.401

- Ø 10 mm, flat

Order-No. LCD.204



Accessories for the Light Coagulators



Screw-in probes

all following probes are suitable for any probe adapter
all following contact heads are autoclavable

Probes with contact areas of Ø 7 mm

for use mainly in proctology;
all probes are available as autoclavable and non-autoclavable versions

for use in the obliteration of hemorrhoids

- working length app. 110 mm
- luminous power app. 40 W/cm²

Version 1:

Probe, autoclavable, angled app. 30°

Order-No. LCD.520

Version 2:

Probe, not autoclavable, angled app. 30°

Order-No. LCD.521

for use in general proctologic applications

- working length app. 220 mm
- luminous power app. 40 W/cm²

Version 1:

Probe, autoclavable, angled app. 20°

Order-No. LCD.522

Version 2:

Probe, not autoclavable, angled app. 20°

Order-No. LCD.523

for hemostasis in polypectomy

- working length app. 350 mm
- luminous power app. 40 W/cm²

Version 1: Probe, autoclavable,
angled app. 10°

Order-No. LCD.524

Version 2:

Probe, not autoclavable, angled app. 10°

Order-No. LCD.525

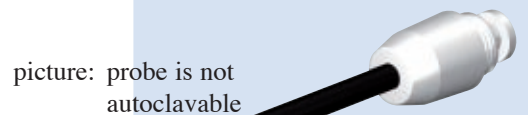
Contact cap, alternatively

- flat, Ø 7 mm, contact surface made of Teflon FEP
Order-No. LCD.620

- flat, Ø 7 mm -contact surface made of sapphire crystal
Order-No. LCD.621

Gasket or contact caps Ø 7 mm

Order-No. LCD.629





Accessories for the Light Coagulators

Probes with contact areas of Ø 11 mm

- for application in gynecology and pediatric surgery
- working length app. 150 mm
- luminous power app. 40 W/cm²
- autoclavable and non-autoclavable versions available

Version 1:

Probe, autoclavable, angled 0°

Order-No. LCD.510

Version 2:

Probe, autoclavable, angled app. 20°

Order-No. LCD.512

Version 3:

Probe, not autoclavable, angled 0°

Order-No. LCD.511

Version 4:

Probe, not autoclavable, angled app. 20°

Order-No. LCD.513

Contact caps, alternatively:

- flat, Ø 11 mm, contact surface made of Teflon FEP
Order-No. LCD.610
- flat, Ø 11 mm, contact surface made of sapphire crystal
Order-No. LCD.611

Gasket for contact caps Ø 11 mm

Order-No. LCD.619

The Light Coagulators LC 250 D and LC 150 D are



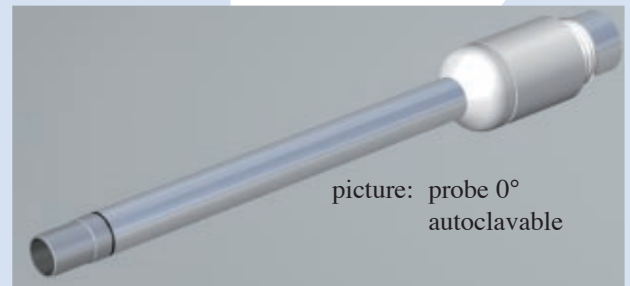
-conform according to MPG 93/42/EWG.

Developments and technical modifications are reserved.

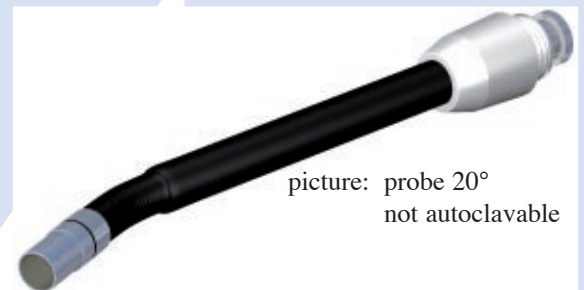
GHS Medical GmbH

Julius-Bührer-Str. 2
78224 Singen

Tel. 0049-7731-1898969
Fax 0049-7731-1898970
Mail info@ghs-medical.com



picture: probe 0°
autoclavable



picture: probe 20°
not autoclavable

